

Court Style Home in Port Riverwalk

The BROOKVIEW

3 Beds • 2.5 Baths • 2 Garage Bays • 1,586 – 1,589 fsf



Elevation A - Farmhouse

FEATURES:

Island Kitchen and Pantry
Primary Suite with Large Walk-in Closet
Convenient Upper-Level Laundry

AVAILABLE OPTIONS INCLUDE:

Extended Patio/Covered Patio
Mud Room Bench & Cubbies
Gas Fireplace with Built-in Cabinets
Tray Vault in Primary Bedroom
Barn Door at Primary Bath
Deluxe Primary Bath
Stone Accents Across Front of Home



Elevation B - Craftsman



Elevation C - Colonial

Ask your Sales Consultant to see more exterior color options!

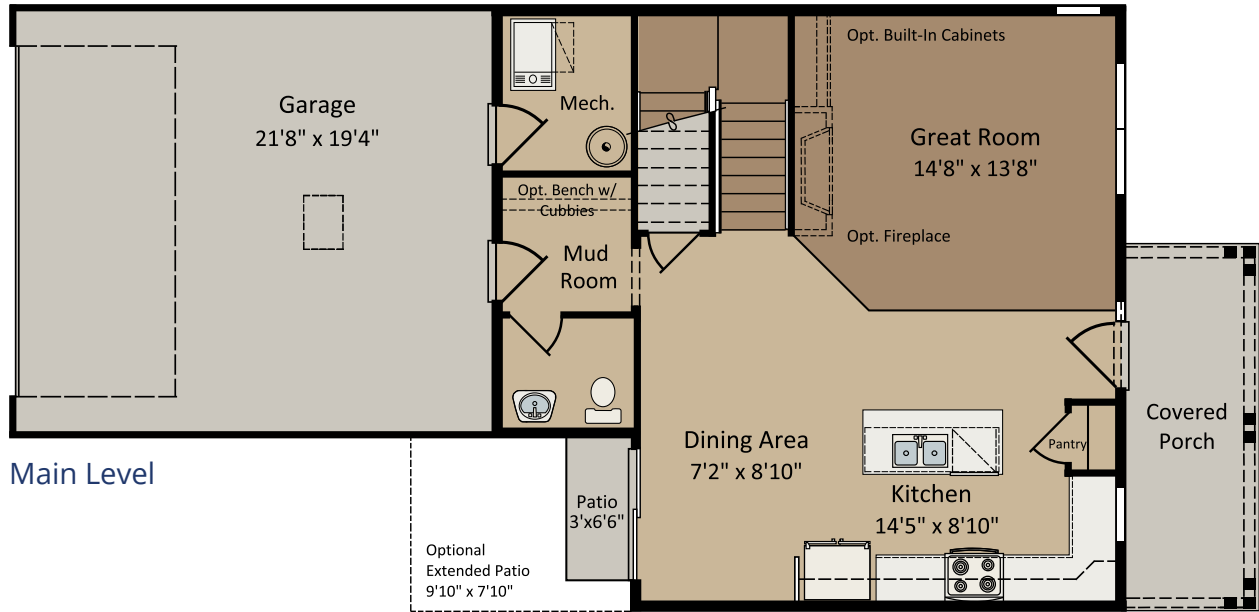
CENTRA HOMES_{LLC}

CentraHomes.com

The BROOKVIEW

3 Beds • 2.5 Baths • 2 Garage Bays • 1,586 – 1,589 fsf

Farmhouse floor plan shown; covered porch, window placement and fsf may vary per elevation.



Optional Primary Bath Shower with Tile Surround

