

# The REFUGE

3 Beds | 2.5 Baths | 2 Garage Bays | 2,329 – 2,337 fsf | Slab-on-grade



Elevation A – Farmhouse (2335 fsf)

**FEATURES**

- Covered Entry
- Loft
- Kitchen Center Island and Walk-in Pantry
- Upper Level Laundry Room
- Primary Suite with Large Walk-in Closet
- Main Level Study/Flex Room
- Fourth Bedroom ilo Loft (per plan)
- Stone Accents (per plan)



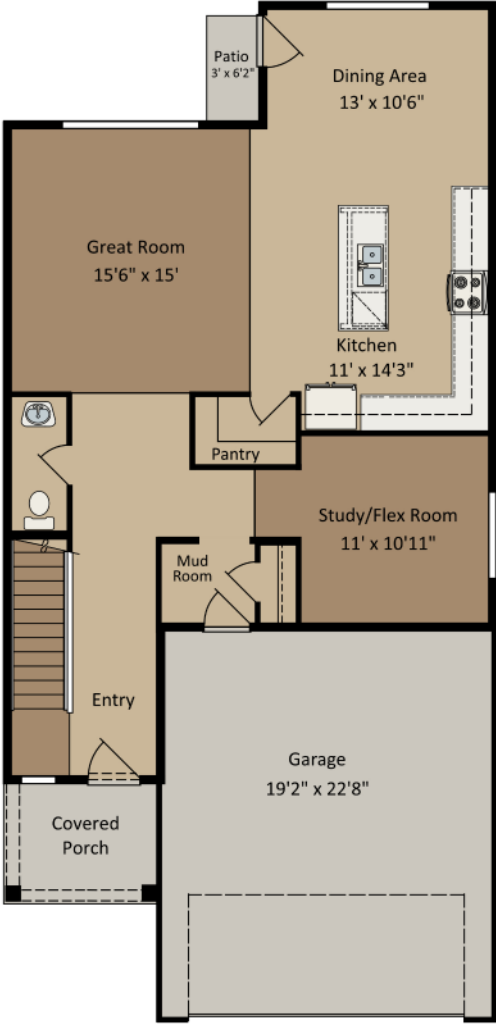
Elevation B – Craftsman (2329 fsf)



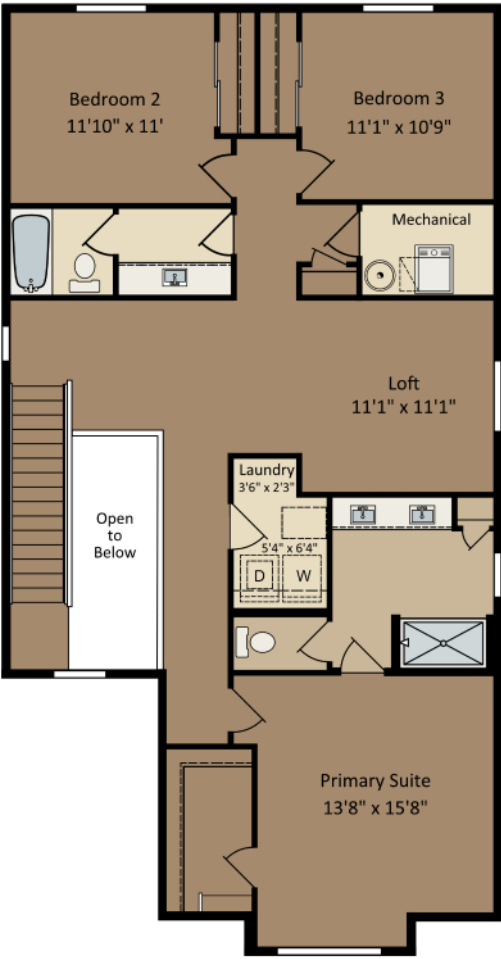
Elevation C – Prairie (2337 fsf)

# The REFUGE

3 Beds | 2.5 Baths | 2 Garage Bays | 2,329 - 2,337 fsf | Slab-on-grade  
Elevation A shown



Main Level



Upper Level



4th Bedroom in lieu of Loft (per plan)

