

Single-Level Home in Port Riverwalk

The BROOKLAND

1 – 3 Beds • 1.5 – 3 Baths • 2 Garage Bays • 1,382 – 2,219



Elevation A - Farmhouse

FEATURES:

Island Kitchen and Pantry
Primary Suite with Large Walk-in Closet
Flex Room

AVAILABLE OPTIONS INCLUDE:

Extended Patio/Covered Patio
Cabinet and Sink in Laundry Room
Gas Fireplace with Built-in Cabinets
Tray Vault in Primary Bedroom
Barn Door at Primary Bath
Deluxe Primary Bath
French Doors at Flex Room
Second Bedroom in Lieu of Flex Room
Stone Accents Across Front of Home
Finished Lower Level with Bedroom,
Family Room Game Area & Wet Bar



Elevation B - Colonial



Elevation C - Cottage

Ask your Sales Consultant to see more exterior color options!

CENTRA HOMES LLC

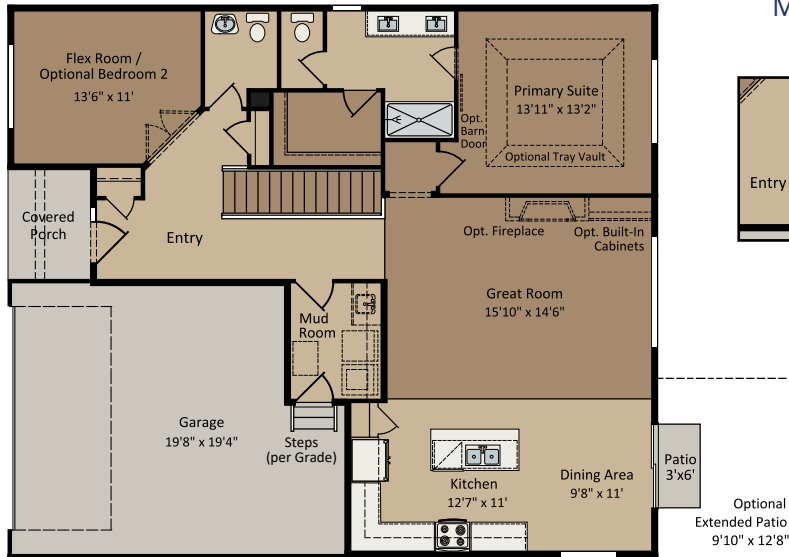
CentraHomes.com

The BROOKLAND

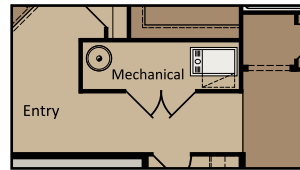
1 – 3 Beds • 1.5 – 3 Baths • 2 Garage Bays • 1,382 – 2,219

Farmhouse floor plan shown; covered porch, window placement and fsf may vary per elevation.

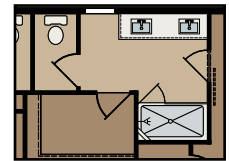
Main Level



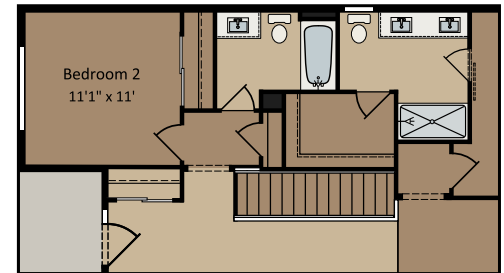
Main Level Slab on Grade: Mechanical Room in Lieu of Stairs



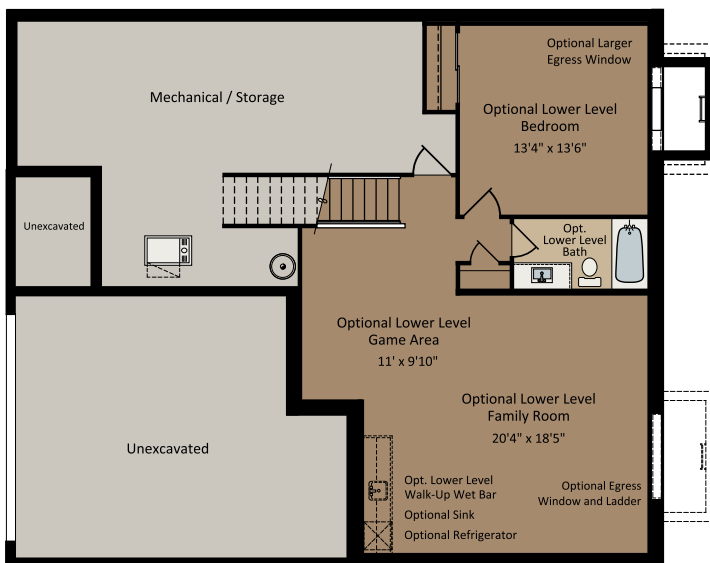
Optional Primary Bath Shower with Tile Surround



Optional Bedroom in Lieu of Flex Room



Optional Finished Lower Level



Walkout Optional Finished Lower Level

