

Single-Level Home in Port Riverwalk

The MAJESTIC

2 – 5 Beds • 2.5 – 3.5 Baths • 2 Garage Bays • 1,903 – 3,185



Elevation A - Farmhouse



Elevation B - Colonial



Elevation C - Cottage

FEATURES:

Island Kitchen and Walk-In Pantry
Primary Suite with Large Walk-in Closet
Flex Room

AVAILABLE OPTIONS INCLUDE:

Extended Patio/Covered Patio
Mud Room Drop Zone/Bench with
Cubbies
Cabinet and Sink in Laundry Room
Gas Fireplace with Built-in Cabinets
Tray Vault in Primary Bedroom
Barn Door at Primary Bath
Deluxe Primary Bath
French Doors at Flex Room
Bedroom in Lieu of Flex Room
Stone Accents Across Front of Home
Finished Lower Level with Bedroom(s),
Family Room, Game Area & Wet Bar

Ask your Sales Consultant to see more exterior color options!

CENTRA HOMES_{LLC}

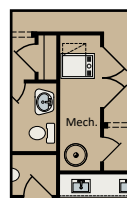
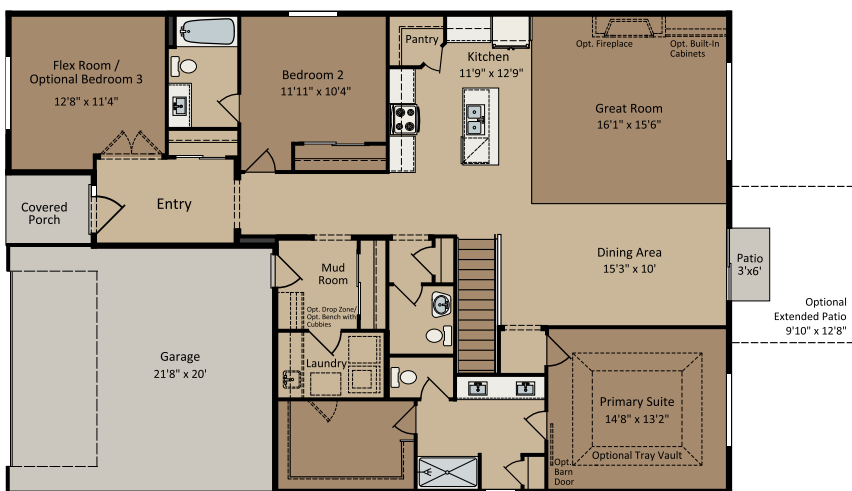
CentraHomes.com

The MAJESTIC

2 – 5 Beds • 2.5 – 3.5 Baths • 2 Garage Bays • 1,903 – 3,185

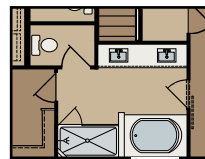
Farmhouse floor plan shown; covered porch, window placement and fsf may vary per elevation.

Main Level

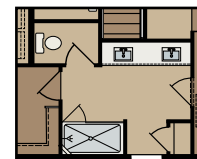


Main Level
Slab on Grade:
Mechanical Room
in Lieu of Stairs

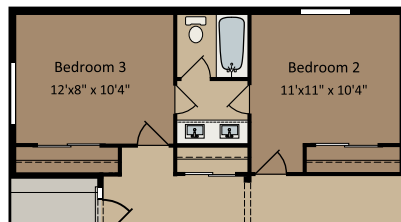
Opt. Deluxe
Primary Bath



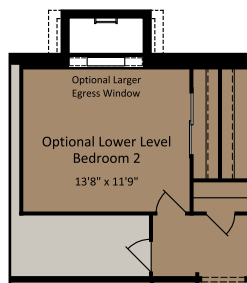
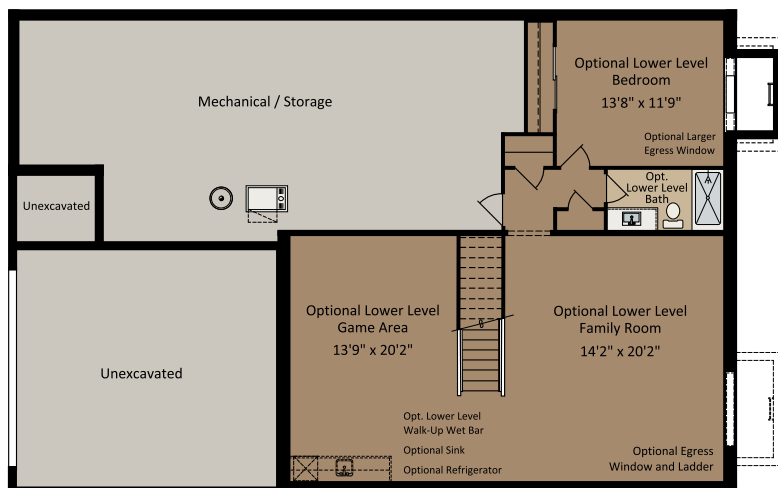
Opt. Primary Bath
Shower with Tile
Surround



Opt. Bedroom in Lieu of Flex Room



Optional Finished Lower Level



Opt.
Lower Level
Bedroom 2

