

Single-Level Home in Foxtail Meadows

The BARNSTABLE

2 – 3 Beds | 2 – 3 Baths | 3 – 4 Garage Bays | 1,646 – 2,869 fsf



FEATURES

- One-Level Living
- Covered Porch/Entry
- Mud Room with Walk-In Closet
- Kitchen Island
- Walk-In Pantry
- Gas Fireplace
- Primary Suite with Large Walk-in Closet
- Deluxe Primary Bath with Soaking Tub
- Three-Bay Garage
- Fourth Garage Bay (*per plan*)

Elevation A — Farmhouse



Elevation B — Cottage



Elevation C — Prairie

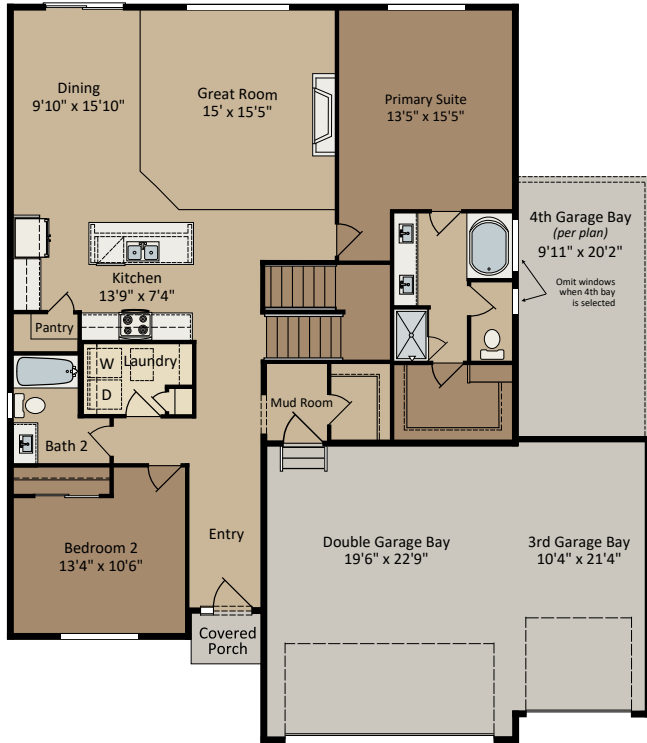
CENTRA HOMES LLC

CentraHomes.com

The BARNSTABLE

Farmhouse floor plan shown; covered porch, window placement and fsf may vary per elevation.

Main Level



Unfinished Lower Level

