

Two-Story Twin Home in Foxtail Meadows

The HAMPTON

Slab on Grade • 3 – 4 Beds • 2.5 Baths • 2 Garage Bays • 2,204 fsf



Elevation A - Farmhouse



Elevation B - Cottage



Elevation C - Prairie

FEATURES:

Open Plan with Two-Story Foyer
Island Kitchen and Walk-in Pantry
Loft
Double-Bowl Vanity in Master Bath

AVAILABLE OPTIONS INCLUDE:

Extended Patio/Covered Extended Patio
Mud Room Bench with Cubbies / Drop Zone
Traditional or Modern Gas Fireplace
Built-In Cabinets at Fireplace
Laundry Cabinets & Sink
Double-Bowl Vanity in Full Bath
Tray Vault in Master Bedroom
Barn Door at Master Bath
Tile Shower Master Bath
Tile Shower with Door Master Bath
Tub/Shower Master Bath
Full-Height Cabinet in Master Bath
Bedroom 4 in Lieu of Loft

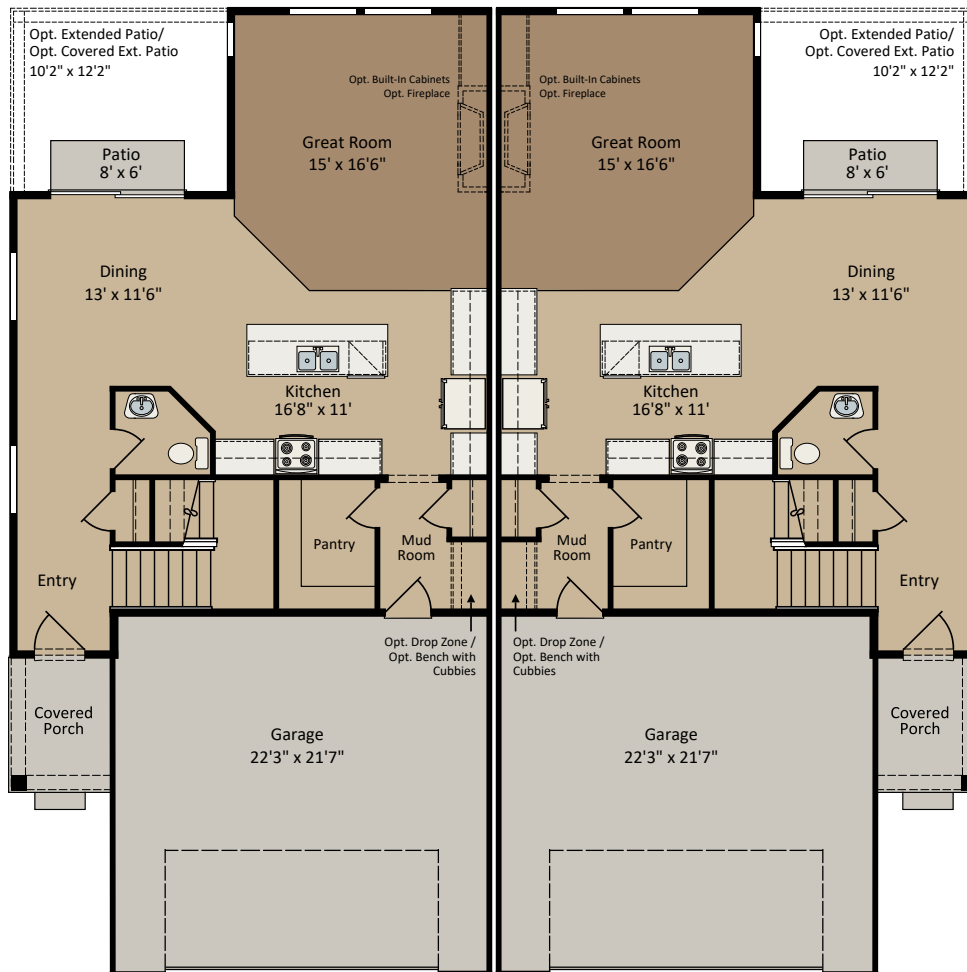
CENTRA HOMES_{LLC}

CentraHomes.com

The HAMPTON

Farmhouse floor plan shown; covered porch, window placement and fsf may vary per elevation.

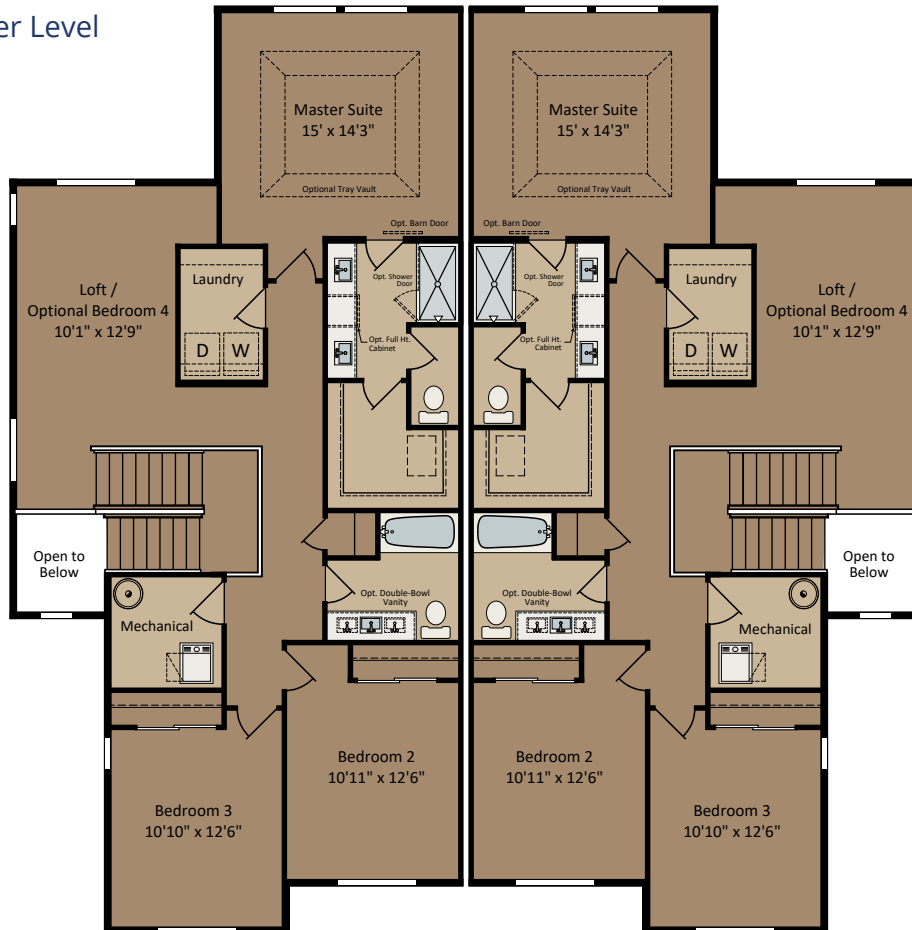
Main Level



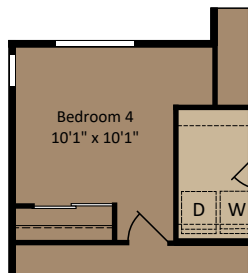
The HAMPTON

Farmhouse floor plan shown; covered porch, window placement and fsf may vary per elevation.

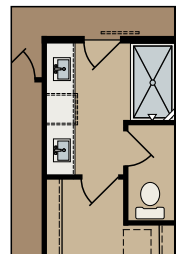
Upper Level



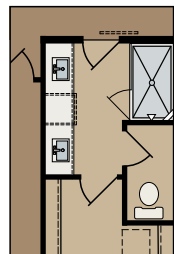
Optional Bedroom 4 in Lieu of Loft



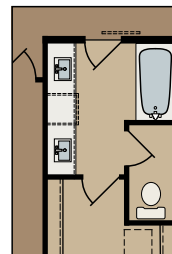
Optional Master Baths



Tile Shower



Tile Shower with Door



Tub/Shower in Lieu of Shower

Optional Laundry Cabinets & Sink

