

Single Level Home in The Meadows at Hugo

# The CONCORD

2 – 3 Beds • 2 Baths • 2 Garage Bays • 1611 FSF • Slab-on-Grade



A - Farmhouse



B - Colonial



C - Cottage

## FEATURES:

- Covered Entry
- Flex Room
- Island Kitchen and Pantry
- Main Level Laundry
- Primary Suite with Large Walk-In Closet
- Double-Bowl Vanity in Primary Bath

## OPTIONS INCLUDE:

- Extended Patio/Ext. Covered Patio
- Sunroom
- Sunroom with Extended Patio/Extended Covered Patio
- Extended Garage
- French Doors at Flex Room
- Bedroom 3 in Lieu of Flex Room
- Gas Fireplace
- Built-In Cabinets at Fireplace
- Laundry Cabinets & Sink
- Tray Vault Ceiling in Primary Bedroom
- Barn Door at Primary Bath
- Deluxe Primary Bath with Soaking Tub
- Walk-In Shower Primary Bath
- Walk-In Shower with Door Primary Bath
- Stone Accents Across Front of Home

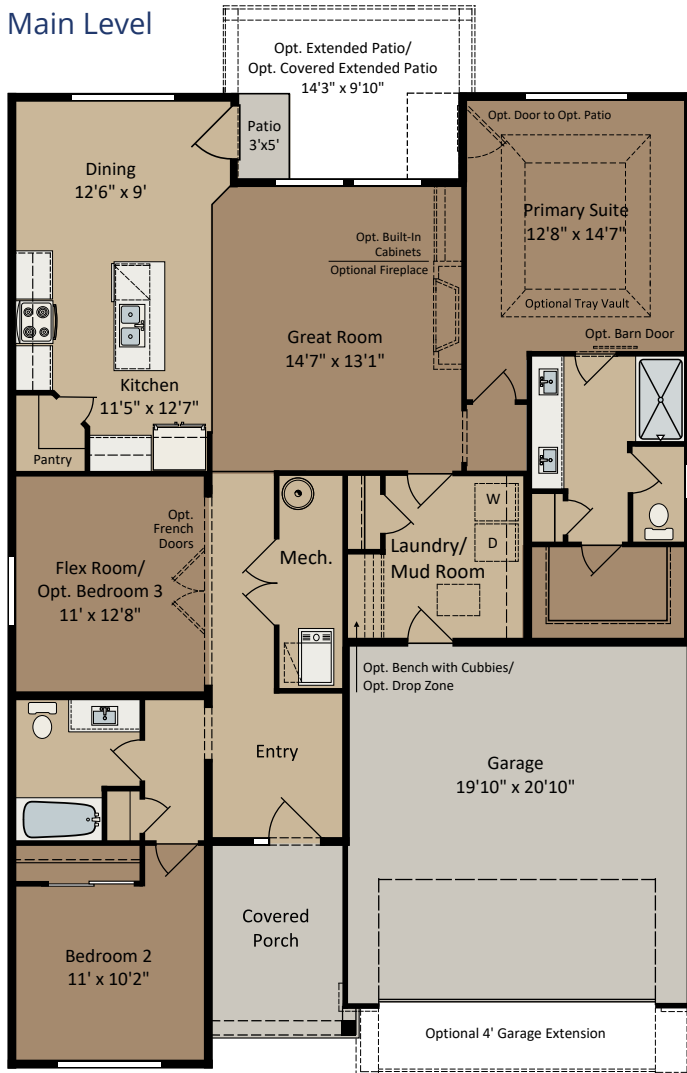
## CENTRA HOMES<sub>LLC</sub>

CentraHomes.com

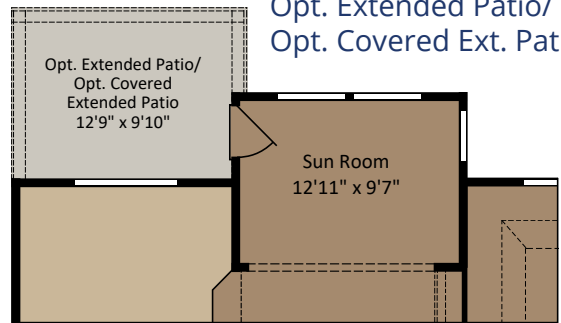
# The CONCORD

Farmhouse floor plan shown; covered porch, window placement and fsf may vary per elevation.

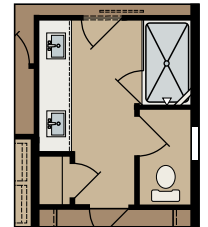
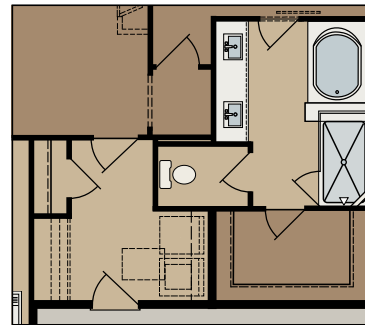
## Main Level



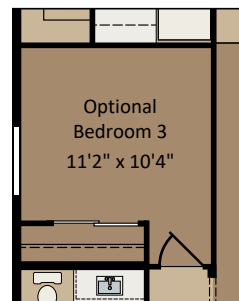
Opt. Sunroom with  
Opt. Extended Patio/  
Opt. Covered Ext. Patio



## Optional Primary Baths



Optional Bedroom 3  
in Lieu of Flex Room



Optional Laundry  
Cabinets & Sink

