

Two-Story Home in The Meadows at Hugo

The TRENTON

3 Beds • 2.5 Baths • 2 Garage Bays • 2163 FSF • Slab-on-Grade



A - Farmhouse



B - Craftsman



C - Prairie

FEATURES:

- Covered Entry
- Island Kitchen and Walk-In Pantry
- Upper Level Laundry
- Master Suite with Large Walk-In Closet
- Double-Bowl Vanity in Master Bath

OPTIONS INCLUDE:

- Extended Patio/ Extended Covered Patio
- Gas Fireplace
- Built-In Cabinets at Fireplace
- Tray Vault Ceiling in Master Bedroom
- Laundry Cabinets & Sink
- Open Railings
- Barn Door at Master Bath
- Master Bath - Shower with Tile Surround
- Master Bath - Shower with Tile Surround and Door
- Stone Accents Across Front of Home

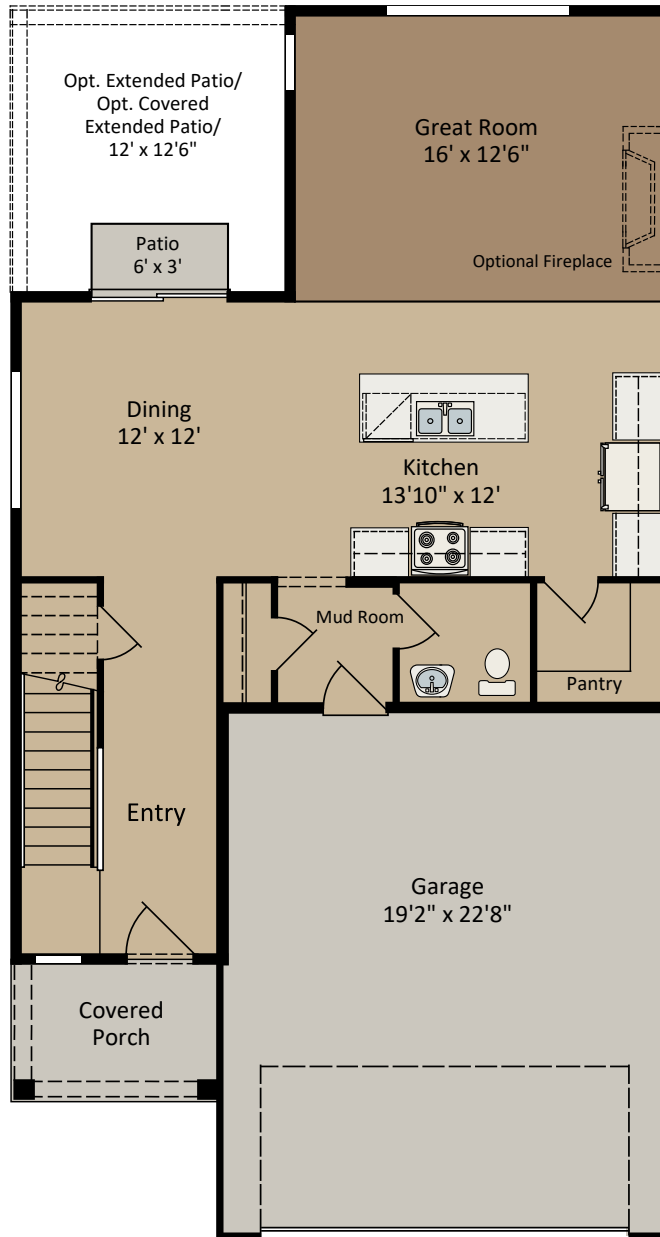
CENTRA HOMES LLC

CentraHomes.com

The TRENTON

Farmhouse floor plan shown; covered porch, window placement and fsf may vary per elevation.

Main Level



The TRENTON

Farmhouse floor plan shown; covered porch, window placement and fsf may vary per elevation.

Upper Level

