

The MAPLE

3 – 5 Beds | 2 – 3 Baths | 3 Garage Bays | 1,350 – 2,404 fsf

FEATURES

- Covered Entry
- Kitchen Island
- Vaulted Ceiling in Great Room
- Walk-in Closet in All Main Level Bedrooms
- Three-Bay Garage



Elevation C



Elevation D (1345 – 2399 fsf)

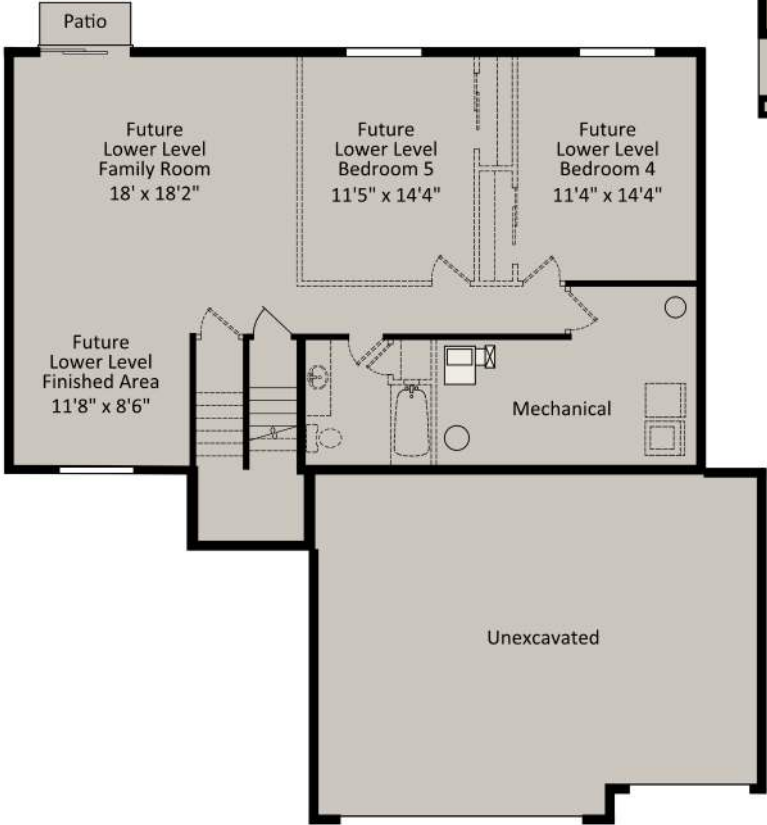
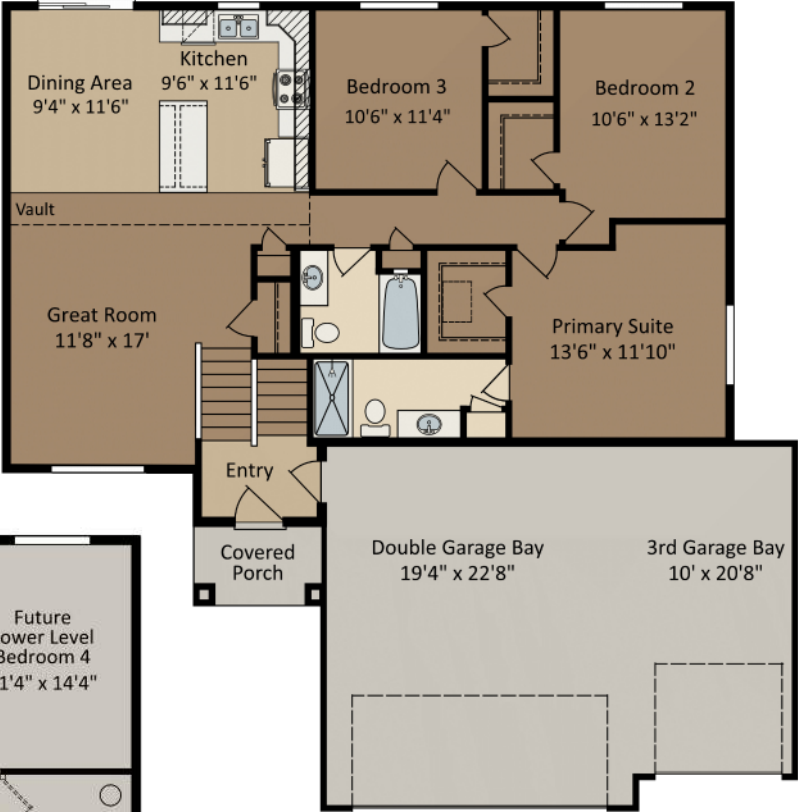
CENTRA HOMES LLC

CentraHomes.com

The MAPLE

Elevation C shown

Main Level



Unfinished Lower Level

