

# The MAPLE

3 - 5 Beds | 2 - 3 Baths | 3 Garage Bays | 1,350 - 2,404 fsf



Elevation A



Elevation B (1342 - 2396 fsf)



Elevation C

## FEATURES

Covered Entry

Kitchen Island

Vaulted Ceiling in Great Room

Primary Suite with Walk-in Closet

Walk-in Closet in All Main Level  
Bedrooms

Three-Bay Garage

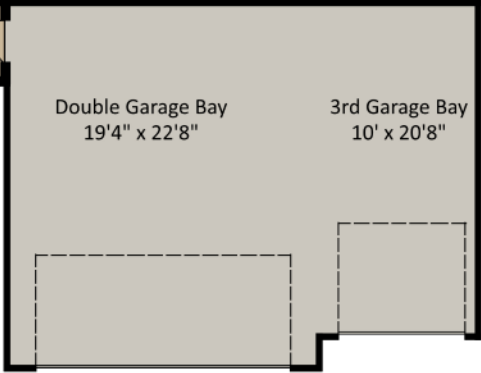
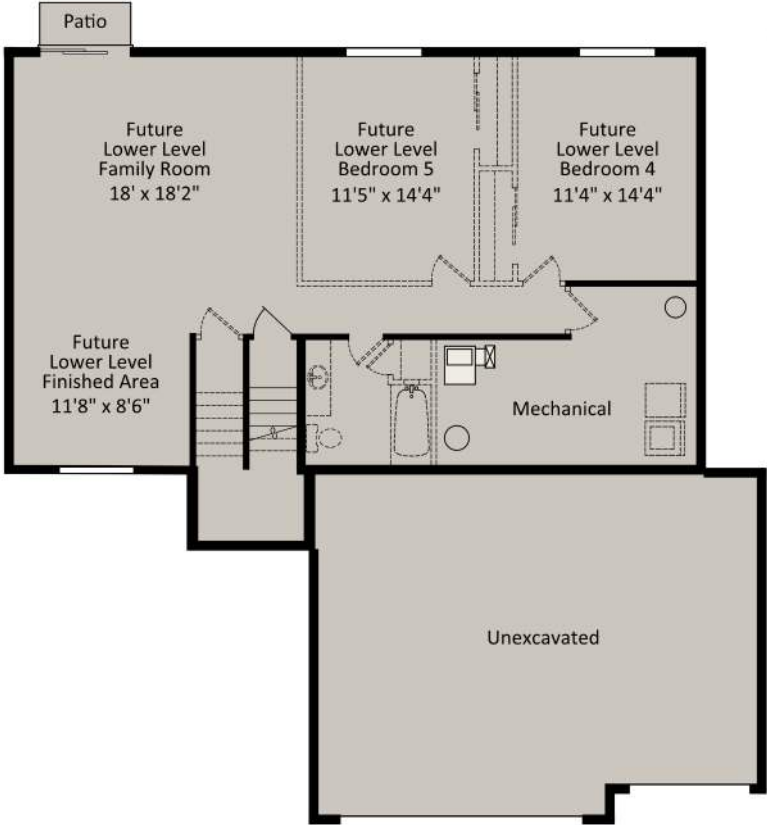
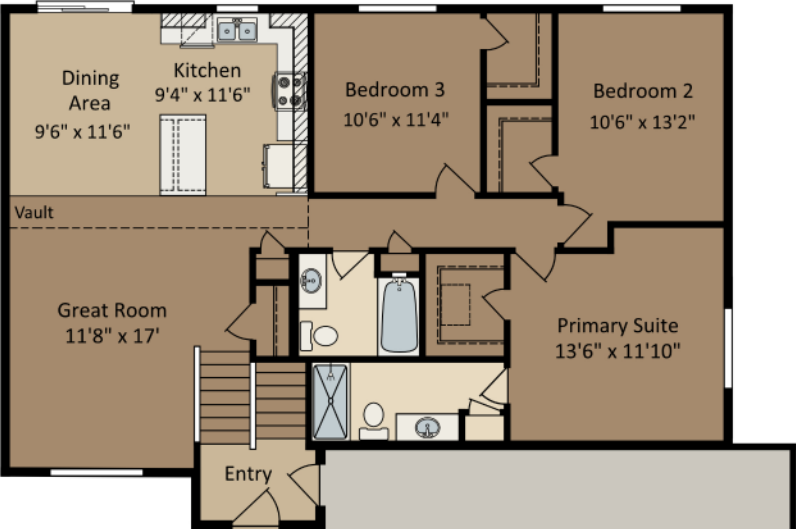
**CENTRA HOMES** LLC

CentraHomes.com

# The MAPLE

Elevation A Walkout shown; covered porch, window placement and fsf may vary per elevation.

Main Level



Unfinished Lower Level

