

# The PINE

3 – 5 Beds | 2 – 3 Baths | 3 Garage Bays | 1,462 – 2,682 fsf



Elevation A



Elevation B



Elevation C

## FEATURES

- One-Level Living
- Covered Entry
- Mud Room
- Kitchen Island
- Primary Suite with Walk-in Closet
- Three-Bay Garage

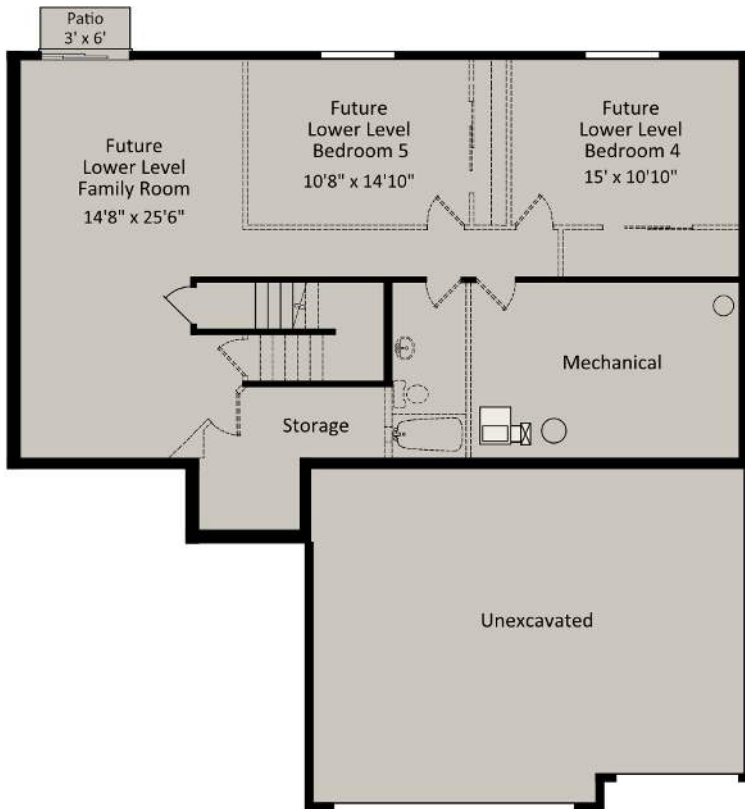
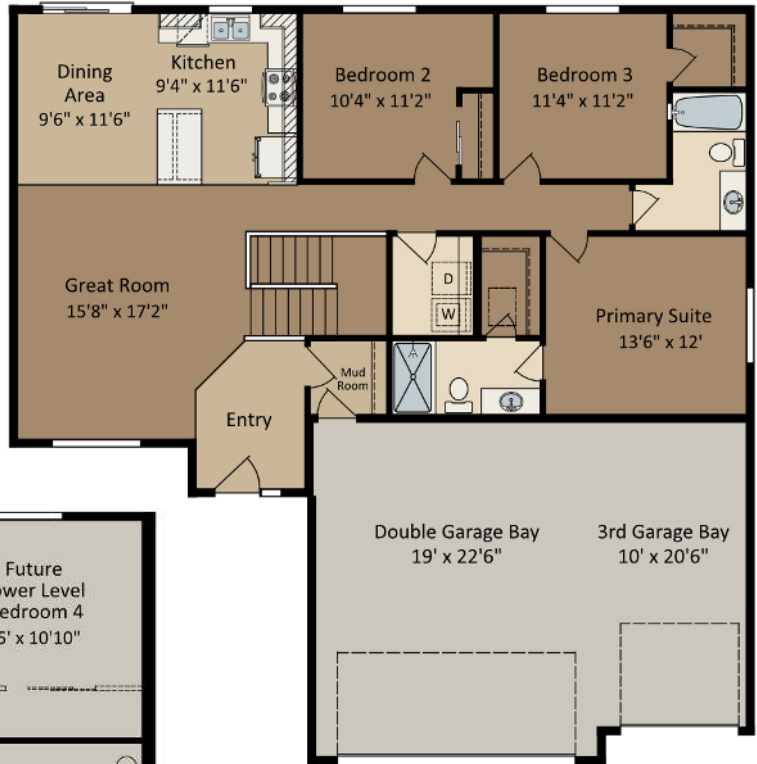
**CENTRA HOMES** LLC

CentraHomes.com

# The PINE

Elevation A Walkout shown; covered porch, window placement and fsf may vary per elevation.

Main Level



Unfinished Lower Level

